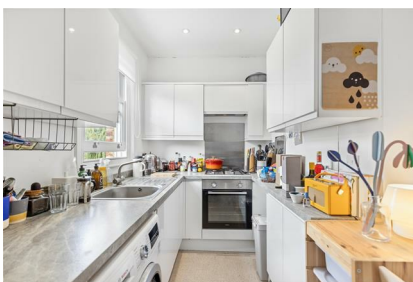


# Parkheath

*Sold on Service*

## Goldhurst Terrace NW6

£2,350 PCM (£542 per week) - Camden Band D



Two-bedroom apartment  
South Hampstead Conservation Area

Spacious reception with semi open-plan kitchen  
Modern bathroom/WC  
Close to local shops, cafés and amenities

West Hampstead Office 020 7794 7111

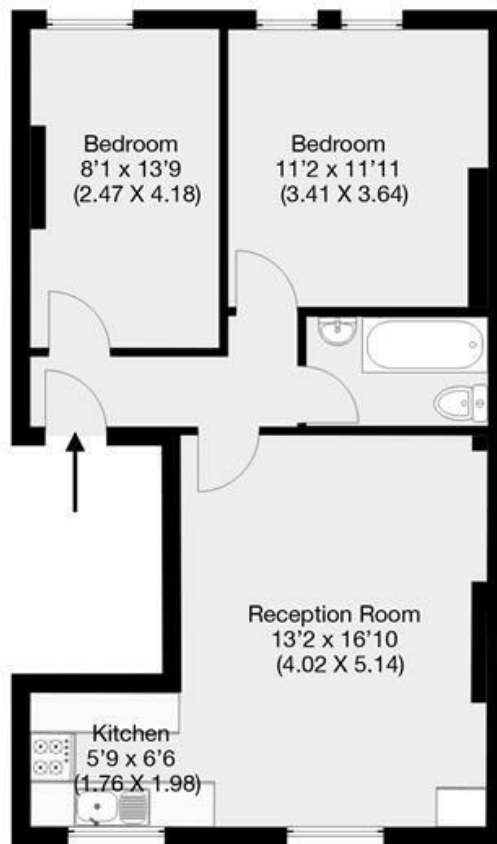
Top (second) floor of period conversion  
3-minute walk to Finchley Road Underground  
(Zone 2)

High ceilings and sash windows  
Well-proportioned bedrooms  
EPC: Rating C, Council Tax: Camden, band D



## Goldhurst Terrace, London, NW6

Approximate Gross Internal Area 56 qm / 603 sqft



### Second Floor

THIS FLOOR PLAN IS PRODUCED FOR PARKHEATH SUBMITTED BY ARCHIMEDIA web; [www.archi-media.co.uk](http://www.archi-media.co.uk)

Whilst every attempt has been made to ensure the accuracy of the floor plan contained here, measurements of doors, windows and rooms are approximate and no responsibility is taken for any error, omission or misstatement. These plans are for representation purposes only and should be used as such by any prospective buyer or lease. Specifically no guarantee is given on the gross internal floor area of the property if quoted on this plan and any figures given is initial guidance only and should be treated as such.

The particulars do not constitute part of an offer or contract. The particulars, including text, photographs and plans, are for the guidance only of prospective purchasers/tenants and must not be relied upon as statements of fact. The descriptions provided therein represent the opinion of the author and whilst given in good faith should not be construed as statements of fact. Nothing in these particulars shall be deemed a statement that the property is in good condition or otherwise or that any services or facilities are in good working order. All measurements are approximate